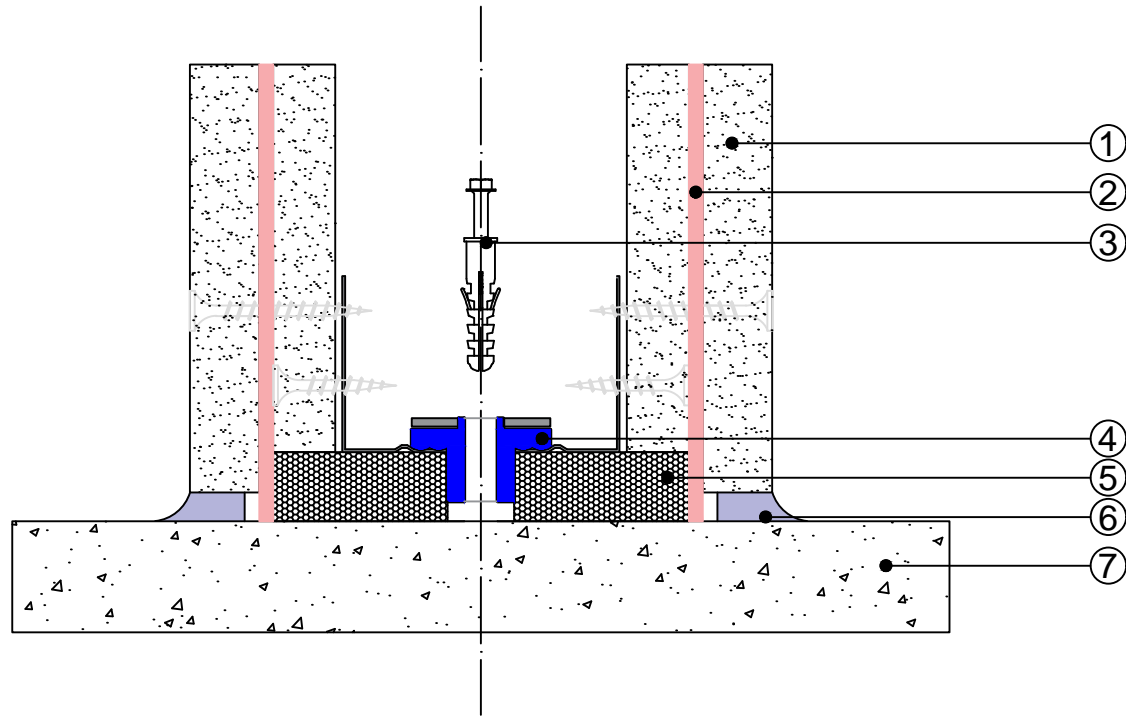


## Indicative Dry-wall vibration isolation application



- ① Gypsumboard 12.5 mm
- ② Mass Loaded Vinyl membrane: ISOLfon-Barrier2.5 mm
- ③ Anchor
- ④ Rubber Washer Vibro-RW
- ⑤ Regufoam 12.5 mm
- ⑥ Elastic mastic
- ⑦ Concrete slab

Subject to change without notice

Design and Production according to Quality Assurance System which complies with **ISO 9001.2008**.



www.vibro.gr  
info@vibro.gr

TITLE	SCALE	LAST DATE REVISED	SORT CODE	DRAWING NO.
Vibro-RW Dry-wall vibration isolation application	All dimensions are in mm U.O.N.	03-2022	Vibro-RW	01