

ALPHA ACOUSTIKI
In TUNE with YOUR needs

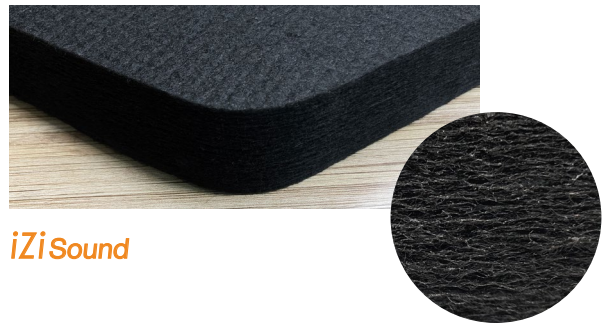
iziSound



ECO FRIENDLY POLYESTER FIBER
WALL ACOUSTIC PANELS

iZiSound

ECO FRIENDLY POLYESTER FIBER WALL ACOUSTIC PANELS



iZiSound

Description

iZi Sound panels are an economical, ecological and effective solution for improving the acoustic quality of a room. Manufactured from thermobonded recycled polyester fiber, entirely free from any phenolicformaldehyde binders. Its density progressively increases throughout its thickness, resulting in exceptional acoustic properties.

The PET felt polyester fibers used in **iZiSound** are sourced from recycled plastic bottles, making it a post-consumer material that significantly contributes to environmental sustainability.

Color: Black / White upon request

Thickness: 50mm

Weight: 2kg/m²

Key Features

Eco friendly: Manufactured mainly from recycled & recyclable materials, it minimizes its environmental impact for eco-conscious practices.

Flexibility: Particularly lightweight, flexible and easy to assemble.

Stability: Unaffected by ultraviolet radiation, bacteria, microorganisms, insects & more it exhibits durability and a long-lasting life cycle.

Fire Safety: The primary core of this product possesses self-extinguishing properties in accordance with FMVSS 302:2011 standards, as certified by Bureau Veritas.

Indoor Air Quality: Certified according to ISO 16000, it meets indoor air quality standards. Additionally, it is VOC (Volatile Organic Compounds) and formaldehyde-free, as verified by CSI-SpA Italy.

Effective: High sound absorption capacity.

Acoustic performance

The sound absorption index (α_s) per square meter, according to ISO 354.2003 and the weighted sound absorption coefficient (α_w) according to ISO 11654.1997

Type: iZiSound.50mm.38kg/m³	125 Hz	250	500	1k	2k	4k	Weighted Sound Absorption Coefficient (α_w)	Sound Absorption Class
Sound Absorption Coefficient	0.30	0.65	0.85	0.95	0.90	0.95	1	A

Tested by accredited laboratories.

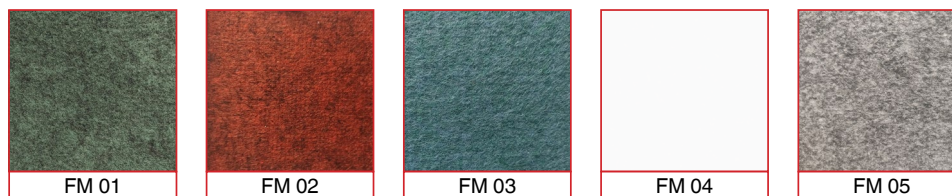
Installation

The accessories shown in the figure can be used to attach the panels to the wall. The metal elements are manually screwed onto the back side of the panel. The suspension hooks thus inserted into the panel can be anchored to the L-shaped screws attached to the wall.



Not included

Standard Felt Face color collection



Color Matching

Batch to batch variations in shade may occur with commercial tolerances. Photographic felt scans are not color accurate. Always request actual felt samples, before ordering.

Standard Wood Face pattern collection

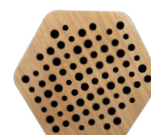
The panels are manufactured with optional perforated wood face. There is a wide variety of perforation patterns. For our full collection please visit our website. Custom patterns are available upon request.



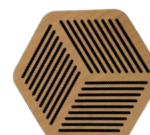
Lines



Maze



Bubbles



Qube



Omni

STANDARD SHAPES AND FACES

izi Sound-Rec : Rectangle form



izi Sound-Rec



izi Sound-Rec.Wood
Leaf



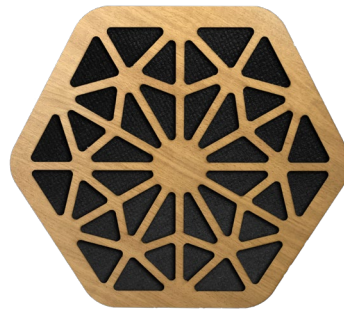
izi Sound-Rec.Felt
Color FM 02

Dimensions: 45 x 45 cm Front view area: 0.19m² Side edges area: 0.08m²

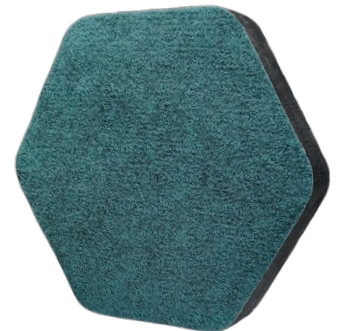
izi Sound-Hexa : Hexagon form



izi Sound-Hexa



izi Sound-Hexa.Wood
Jali



izi Sound-Hexa.Felt
Color FM 03

Dimensions: 43.5 x 39 cm Front view area: 0.13 m² Side edges area: 0.065m²

izi Sound-Petalo : Triangle form



izi Sound-Petalo



izi Sound-Petalo.Wood
Bubble



izi Sound-Petalo.Felt
Color FM 01

Dimensions: 50.8 x 53 cm Front view area: 0.19m² Side edges area: 0.08m²

izi Sound is also available in slabs with dimensions 120 x 60 cm and in black or white color, type **iziFON.50**.

ALPHA ACOUSTIKI S.A. combines technical experience and scientific knowledge with its Engineering team, specialized in the field of room acoustics since 1980.

In **TUNE** with **YOUR** needs

Our technical department (tech@alphacoustic.com) would be happy to help you find the best acoustic solution for your project.

Please check our other similar shaped product line [AcouCell](#)



ALPHA ACOUSTIKI S.A.

T. +30 2106779875

info@alphacoustic.com

EUID: ELGEMI.004207401000

www.alphacoustic.com

