

ALPHA **acoustic**

ACOUSTIC FABRICS

ALPHA ACOUSTIKI
In **TUNE** with **YOUR** needs

1.ALPHAcoustic - CL.AirMesh



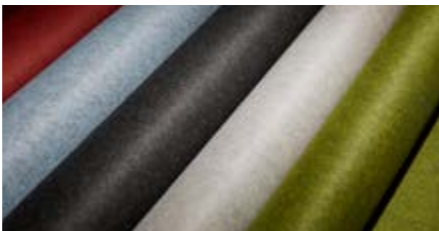
3

2.ALPHAcoustic - CL.CR



4

3.ALPHAcoustic - CL.Son



5

4.ALPHAcoustic - CL.WF
RECYCLED WOOL FABRIC



6

5.ALPHAcoustic - CL.Art
PRINTABLE ACOUSTIC FABRIC



7

ALPHA^{acoustic} - CL.AirMesh

ALPHA^{acoustic} CL Type: AIR MESH is a sound transparent textile that is used to cover acoustic sound absorbing panels. This fabric can cover the sound absorbing material achieved a uniform aesthetic intervention without affecting the acoustic properties of the material it covers.

It has a honeycomb-three dimensional appearance, making it not only visually striking, but providing in-built cushioning for comfort and breath-ability. With a smooth, plain back and cellular face, it has useful depth between the layers which creates shadow, 3D and texture appearance.

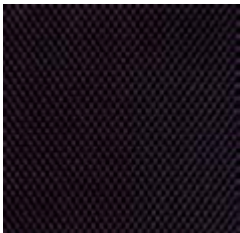
FEATURES

- Due to the unique design, this fabric has high endurance in mechanical stresses.
- Offers high flexibility that is required for easy upholstering.
- Can be cut easily with scissors in various shapes.
- Consists of specially crafted knitted mesh fabric sound transparent from double layer polyester.

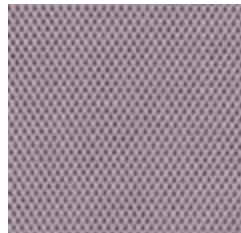
Resistance to fire:

Can be provided with special treatment, which makes it self-extinguishing.

Packing in rolls of 50 m



1 - Black



2 - Gray



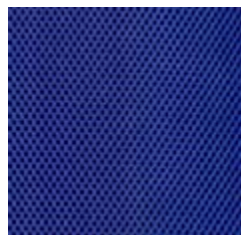
3 - Charcoal



4 - Beige



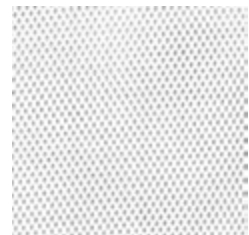
5 - Navy blue



6 - Blue



7 - Red



8 - White

Colour Matching

Batch to batch variations in shade may occur with commercial tolerances.

Maintenance

Vacuum regularly. Wipe clean with a damp cloth or shampoo using proprietary upholstery shampoo.

Note

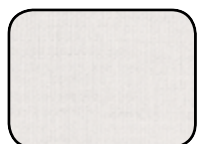
Photographic fabric scans are not color accurate. Always request actual fabric samples before ordering.

ALPHA^{acoustic} - CL.CR

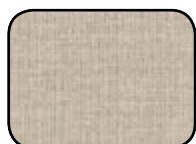
The special sound transparent fabric ALPHA^{acoustic} CL.CR is used for external covering of the acoustic panels. Due to their increased sound transmissibility, the sound absorption capabilities of the internal material are not affected.

TECHNICAL CHARACTERISTICS

Weight	220g/m ² +_ 5% (375g/lin.m. +-5%)
Width	170cm +_ 2% Usable
Abrasion Resistance	Grade A tested in accordance with EN 14465:2003 with a 5 year guarantee of wear-ability (full details available)
Flammability	BS 476 Part 7 Class 1, BS EN 1021 - 1:2006 (cigarette) Note: Flammability performance is dependent on components used.



C.84



C.92



C.73



C.93



C.G.04



C.96



C.72



C.33



C.90



C.16



C.04



C.88



C.48



C.05



C.75



C.89



C.25



C.54



C.80



C.11



C.38



C.76



C.95



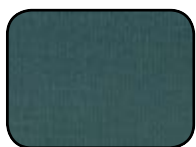
C.86



C.85



C.15



C.87



C.38



C.94



C.97

Colour Matching

Batch to batch variations in shade may occur with commercial tolerances.

Maintenance

Vacuum regularly. Wipe clean with a damp cloth or shampoo using proprietary upholstery shampoo.

Note

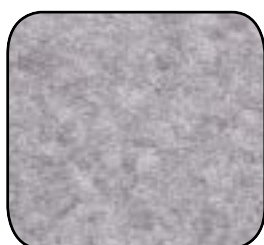
Photographic fabric scans are not color accurate. Always request actual fabric samples before ordering.

ALPHAacoustic - CL.Son

The unique sound transparent fabric with the fibre felted finish ALPHAacoustic CL.Son, is used for external covering of the acoustic panels. Due to their increased sound transmissibility, the sound absorption capabilities of the internal material are not affected.

TECHNICAL CHARACTERISTICS

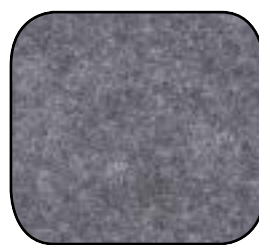
Weight	200g/m ² +_ 5% (340g/lin.m. +-5%)
Width	170cm +_ 2% Usable
Abrasion Resistance	Grade A tested in accordance with EN 14465:2003 with a 5 year guarantee of wear-ability (full details available)
Flammability	BS 476 Part 7 Class 1, BS EN 1021 - 1 (cigarette) Note: Flammability performance is dependent on components used.



HR.02



HR.03



HU.04



HR.05



HU.08



HU.10



HR.06

Colour Matching

Batch to batch variations in shade may occur with commercial tolerances.

Maintenance

Vacuum regularly. Wipe clean with a damp cloth or shampoo using proprietary upholstery shampoo.

Note

Photographic fabric scans are not color accurate. Always request actual fabric samples before ordering.

ALPHAcoustic - CL.WF

RECYCLED WOOL FABRIC



As natural as possible; sheep's wool, a regenerative raw material

ALPHAcoustic CL.WF is a sustainable natural product of Woollen acoustic fabric used for a wide range of applications, including the external covering of acoustic panels or Bass Traps. Due to its increased sound transmissibility, its sound absorption capabilities of the panel's internal material are not affected. Its natural filament is a rapidly renewable resource (it grows naturally from sheep), plus it's 100% biodegradable.

TECHNICAL CHARACTERISTICS

Composition	70% WO - 20% PL - 5% PA - 5% PC
Weight	320gr/m ²
Width	145cm
Sound Absorption	$\alpha_w = 0.65$ (ISO 11654)
Flammability	Cigarette Test (EN 1021-1) (BS 5852 ign. 0) - Pass Match Test (EN 1021-2) (BS 5852 ign. 1) - Pass IMO Test (A.652/16 - upholstery) - Pass



ALPHA^{acoustic} - CL.ART

PRINTABLE ACOUSTIC FABRIC

The sound transparent fabric **ALPHA^{acoustic}-CL.ART** is a specially designed sound transparent fabric, that can be printed in any color or image requested, creating a “Silent” artwork creation.

ALPHA^{acoustic}-CL.ART is polyester based fabric with irregular micro-perforation to allow sound waves to penetrate it and to be absorbed by the absorption material beside it in acoustic panels realizations. The low resistance air flow through the fabric structure assures high sound absorption efficiency. **ALPHA^{acoustic}-CL.ART** is a perfect choice for restaurants, home theaters, recording studios, air terminals and shopping malls. The fabric is printed with a plotter printer, with eco solvent inks, in millions of colors in unlimited aesthetic and decorative creations.



FEATURES

- High acoustic properties, in combination with sound absorption materials.
- Custom Sizes adaptation according to printing needs.
- Printable surface, with high quality color illustration.
- Easy Installation, in acoustic panels upholstery
- Transformation of acoustic panels into art works.
- Creation of advertising panels, that incorporate also logos on it.
- Brilliant colors with unlimited realisations.
- • 100% Recyclable



TECHNICAL CHARACTERISTICS

Weight	290 gr/m ² according to EN ISO 2286-2
Roll Width	130 cm
Finish (External Surface / Color)	Semi-Matt / White
Flammability	Flame Retardant: Class M1/NFP 92-507, Class B1 according to DIN 4102-1
Maintenance	Vacuum regularly. Cleaned with water based cleaning agents

Our graphic designers collaborators will help you to manage the printing process, regarding the photo selection, the print size, resolution, margins and the uploading method.

LEGAL NOTICE

Because of the reproduction process the quality and colour shown in this catalogue may differ from the real product. Selection of products should always be made from samples. All details and technical information stated in this brochure or other publicity material referring to ALPHA ACOUSTIKI's acoustic systems are based on test reports obtained under laboratory conditions. The customer is responsible to check if these information are suitable for the specific, intended application. The customer is responsible to examine if the information regarding our product are suitable for the specific project application. All technical data is subject to change without prior notice. Our general sales and payment conditions apply. The latest technical data and information can be found in our technical data sheets at alphacoustic.com.



In TUNE with YOUR needs

ALPHA ACOUSTIKI Ltd combines technical experience and scientific knowledge of its Engineers who are specialized in the field of room acoustics since 1980.

We create workplaces where people choose to work, tailored to the specific requirements of each job, with particular attention to the acoustic necessities of the employee.

DESIGNING FOR WELL-BEING

The concept designed of ALPHAcoustic products puts in practice all fundamentals of well-being.

Focus on employee and workplace well-being, can result in improved productivity, increased confidence, offering a better staff concentration.

Our Acoustic products help to achieve the WELL Building Standard™ Certification.

Our technical department (tech@alphacoustic.com), would be happy to help you improve the Architectural Acoustics in your project.



CONTACT



ALPHA ACOUSTIKI
73, Apostolopoulou Str.
Chalandri, 15231 Greece



T: +30 210 6779875
F: +30 210 6779269



info@alphacoustic.com
www.alphacoustic.com

Eco-friendly



Recyclable